



ESCS-2000D

A/B Scan with UBM



OPHTHALMOLOGY / ENT

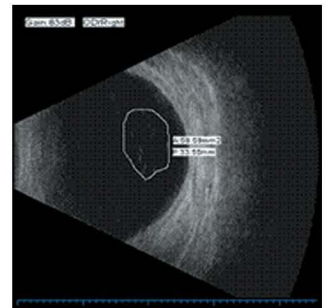
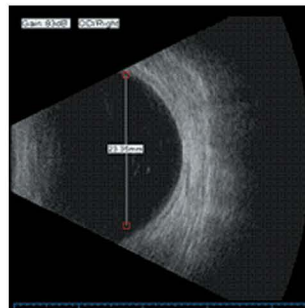
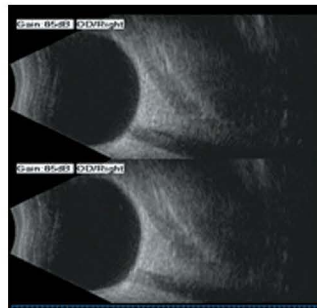
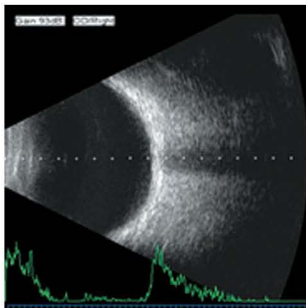


EG7 G!&\$\$\$\$8

A/B Scan with UBM

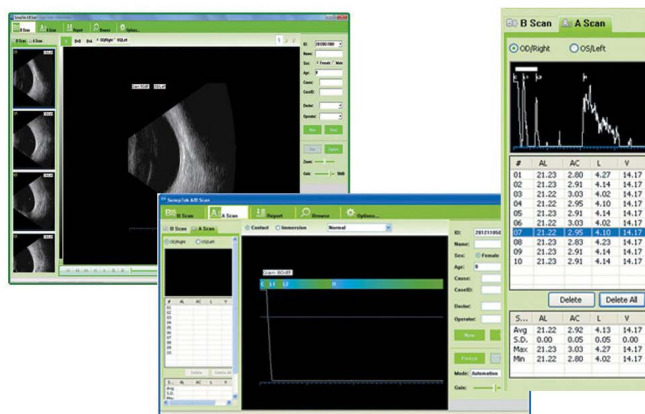


ESCS-2000D A/B Scan with normal and vitreous body enhancement, retina observation mode, location display, focus of infection and the relationship with the surrounding tissue.
 Can be diagnosed vitreous opacity, retinal detachment, eye base tumors, eye diseases etc...
 Le ESCS-2000D is used to measure anterior chamber depth, lens thickness, axial length, diopter calculate of implant IOL etc...





- 15 inch LCD screen
- Built-in battery
- Display Mode: B, B+B, B+A, A
- UBM
- Liner Scanning Method
- Image pixel: 1024x655





Technical Features

Display Mode	B, B+B, B+A, A
Hint	preset keyword
Case Search	Multi-keywords
Screen	15 inch LCD
Built-in battery	can use 4 hours
UBM	Yes
Report template	User-defined
High Resolution Image	Liner Scanning Method
	100% Bandwidth with Short-Pulse Technology
Safe in Operations	No Abrasion of Cornea
	No Cross Infection

Convenient	More Probe Shells Offered
	Easy to change Probe Shell Adjustable Focus by Probe
Transducer	35MHz/50MHz
Scan	Linear scan
Scanning Range	16x10mm 35MHz
Image pixel	1024x655
Resolution	axial $\leq 0.05\text{mm}$, lateral $\leq 0.1\text{mm}$
Gain	30-105 dB

B scan
Frequency: 10MHz/20MHz (optional) ,Magnetic driven, noiseless
Scanning Mode: Sector Scanning
Magnify: Multi continuous magnification, Real-Time magnification
Resolution: Lateral $\leq 0.3\text{mm}$; Vertical $\leq 0.2\text{mm}$
Geometry position precision: Lateral $\leq 10\%$; Vertical $\leq 5\%$
Depth: 60mm
Enhance the part of vitreous body and retina
Gain of probe: 30dB-105dB
Scanning Angle: 53°
Gray Scale: 256
False Color: Multi colors. OCT
Measure type: multigroup distances, perimeters and areas
Image post-processing: multiple curves processing, Pseudo-color processing curve
Movies: 100 images movie review, AVI JPG format image output

A scan
Frequency: 10MHz, with LED
Eye mode: Phakic / Aphakic / Dense / Various IOL
IOL Formula: SRK-II, SRK-T, HOFFER-Q, HOLLADAY, BINKHORST-II, HAIGIS
Precision: $\pm 0.05\text{ mm}$
Depth: 40mm
Measurement: Anterior chamber depth, lens thickness, vitreous body length, total length and average
Stat. Calculation: Average and standard deviation
Store: 10 Scanning results for each eye

Standard accessories
B probe 10MHz
A probe 10MHz
UBM
Built in Computer



ESSE3 srl, Via Garibaldi 30
14022 Castelnuovo D.B. (AT)
Tel +39 011 99 27 706
Fax +39 011 99 27 506
e-mail esse3@chierinet.it
web: www.esse3-medical.com

